

Tour de Farm Flavour Trail

The Saanich Peninsula is a day-tripper's paradise, easily transformed into a flavourful cycling route. Begin your personal journey along the Galloping Goose Trail to discover a full-day culinary adventure that leads you from downtown Victoria through rolling fields to house made gelato, local honey, sweet sips and more. Take your time cycling back along the Lochside Trail. This unique collection of stops is sure to be a highlight of your visit to Greater Victoria.

Stop 1: Downtown Victoria



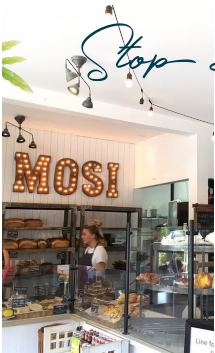
- From downtown Victoria, rent a bike from Bike Tours Victoria, or for a bit of assistance, opt for an e-bike from The Pedaler. Embark on your culinary cycling tour of the Flavour Trails. Hop on the Galloping Goose Trail and settle in for a 40-minute ride to your first stop.

Stop 2: Gardens At HCP



- Your first stop on your self-guided adventure is The Gardens at HCP, a beautiful botanical garden that you can enjoy year-round. Spend as long as you like here, taking in the seasonal blooms and wandering the garden paths. When you're ready for a sweet treat, you need only bike 10 minutes down the road to your next stop.

Stop 3: Mosi Bakery



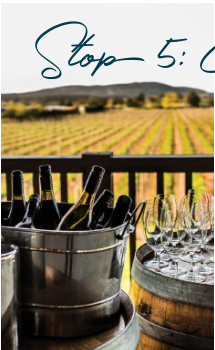
- Indulge in a well-earned cool down at Mosi's and savour their world-famous handmade gelato while soaking up the sun on their charming wrap around veranda.

Stop 4: Country Bee Honey



- When you've had your sampling of Island flavours, head back out on your bike via West Saanich Road and cycle 20 minutes down the road to your third stop, Country Bee Honey Farm. Taste delicious local honey in their storefront and peruse the locally made gifts and products on offer.

Stop 5: Church & State Wines



- After a 6-minute bike ride to Church & State Wines, indulge in a bite at this gorgeous vineyard and treat yourself to a delicious lunch from the Tasting Bar or Bistro. Sample local ingredients weaved into unique dishes or opt to nibble on one of their famous charcuterie boards.

Stop 6: 10 Acres Bistro



- When you arrive back to downtown Victoria after your 75-minute cycle back along the Lochside Regional Trail, drop off your bike and then head to 10 Acres Bistro for a farm to table meal to conclude your grand flavour cycling tour. Here you can sample flavours raised and harvested on the Saanich Peninsula.

Flavour Trail Map



- | | |
|---|----------------------|
| 1 | Downtown Victoria |
| 2 | Gardens At HCP |
| 3 | Mosi Bakery |
| 4 | Country Bee Honey |
| 5 | Church & State Wines |
| 6 | 10 Acres Bistro |